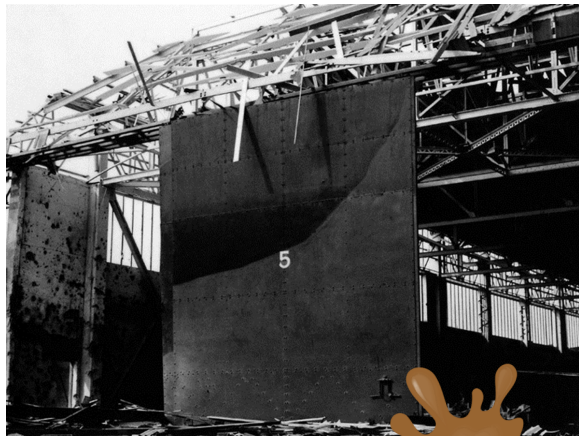


Fooling the Enemy



The Special Works Park:

The Special Works Park (*Royal Engineers*) was set up by the British Army in 1916. This section employed Blacksmiths, Carpenters, Ironsmiths, Painters, Artists and Sculptures. Their work was vital. To name just a few of their many tasks, fake trees for observers to hide in on the battlefield, fake heads to draw out enemy sniper fire and large painted sections of camouflage panels to disguise planes, tanks and soldiers.



RAF Middle Wallop (Museum Archive Photo)

Because of repeated air attacks on Middle Wallop a dummy airfield was constructed in nearby Broughton to fool the enemy. A generator was used to power a fake flare path. It was known as 'Q' and saved Middle Wallop from some of the enemies attacks.

Dummy Paratroopers (Museum item)

These pretend paratroopers had the code name of Rupert and were used to distract the enemy in Operation Titanic on the 6th of June 1944.

From a distance they looked like real paratroopers and were dropped with sound effects and an explosive charge in one foot. This ensured that the enemy didn't discover them on the ground and realise they'd been tricked.

